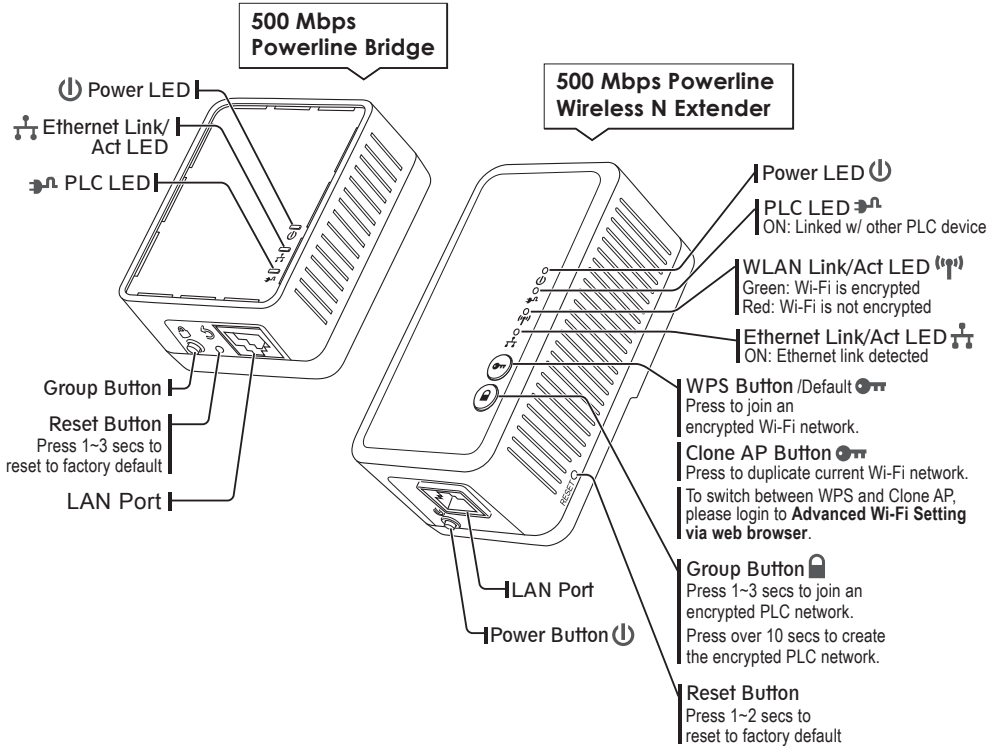


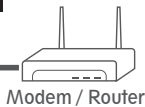
Powerline Wireless Network

QUICK INSTALLATION GUIDE

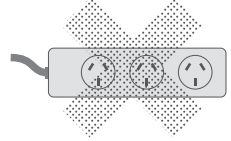
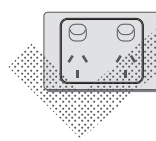
LEDs LIGHT INDICATOR DEFINITION



BEFORE GETTING STARTED

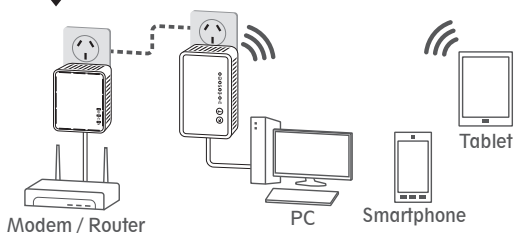


Make sure that router is connected to the Internet.



⚠ Do Not plug PLC adapter into "surge protector".
PLC data transmission might be blocked.

ESTABLISH POWERLINE NETWORK



Step 1

Plug the PLC adapter to AC outlet and connect to router or broadband modem with an Ethernet cable (provided)

Step 2

Plug the PLC Wi-Fi Extender to AC outlet and place it in a location you wish to extend Wi-Fi access.

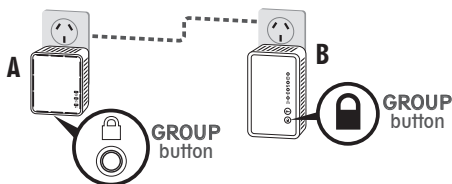
Step 3

Search Wi-Fi network and connect it with (WPA-PSK) default password.*

* The default Wi-Fi password appears on the product label.

CREATE AN ENCRYPTED PLC NETWORK GROUP

User can easily create an encrypted PLC network with 128-bit encryption for network security and data protection. Simply press **GROUP** button on adapters to set up hassle-free PLC encrypted network. To do so, please follow below steps!



Step 1

Press **GROUP** button on both adapters over 10 secs until LED light turns off and on at once to generate new encrypted PLC network. (PLC LED light will be off)

Step 2

Press **GROUP** button of adapter A again for 1~3 sec to start pairing procedure. (Power LED will start blinking)

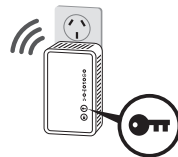
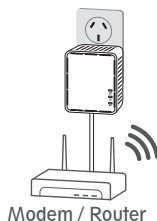
Step 3

Press **GROUP** button of adapter B for 1~3 sec to start pairing procedure. (Power LED will start blinking)

Once Pairing procedure is completed, both of PLC LED light will be on.

DUPLICATE CURRENT SSID & PASSWORD WITH ONE BUTTON

Simply press **Clone AP** button to duplicate your current Wi-Fi SSID and password.



Clone AP button
(Default funtion:WPS)

Step 1

Press **Clone AP button*** on the extender and Wi-Fi LED will start blinking.

Step 2

Press **WPS** button on the router** and Powerline Wi-Fi extender will duplicate current Wi-Fi SSID and password from the router. The extender will reboot once procedure is completed.

*Make sure WPS button has been switched to Clone AP button via web browser. Please refer to p.13 on manual.

**Make sure router is WPS supported.

TROUBLESHOOTING

What if Powerline adapters are not connected?

Make sure PLC LED is on.

- If not, a. Verify that PLC LED adapters are plugged into a power outlet directly.
- b. Press **RESET** button for 2 seconds to recover the default settings.
- c. Shorten the distance between PLC adapters.